

Faith Community Nursing Program

Program Objective

Faith Community Nursing (FCN) equips communities of faith to provide care through health-related ministries. The program links faith leaders and congregations with resources to support their members — body, mind and spirit. Centered on holistic well-being, Texas Health’s FCN program empowers volunteer community-based FCNs and Health Promoters (HPs) to provide this care within the communities they serve.

Statement of Need*

Individuals facing barriers are at greater risk for poor health outcomes or adverse events. Because communities of faith are trusted sources of information, people seek help from clergy, FCNs and HPs, who are uniquely positioned to remove barriers, close gaps in care, advocate, educate, and equip people to live their healthiest lives.



Above: Faith Community Nurses educate their congregations on numerous health topics, including hands-only CPR.

Education and Outreach

Faith Community Nursing provides a wide range of classes and trainings designed for faith leaders, community-based FCNs, HPs, and Texas Health staff. While the primary focus is on the Dallas-Fort Worth Metroplex and surrounding areas, the program also supports the development of programs and faith community nursing practice standards nationwide.

Before serving their congregations, community-based FCNs and HPs complete Texas Health’s required training. The Foundations of Faith Community Nursing course is a comprehensive program that equips registered nurses to integrate spiritual care into their nursing practice and effectively lead a health ministry. The Fundamentals of Health Promotion course provides HPs with essential knowledge for supporting and sustaining health ministry initiatives within their faith communities.

The Texas Health’s FCN program also offers Advance Care Planning training free to the community. This course empowers individuals to document their healthcare wishes and communicate them with loved ones. Topics include living wills, do-not-resuscitate orders, and Medical Power of Attorney. Documenting these decisions ensures an individual’s wishes are honored when they are unable to speak for themselves, particularly at the end of life.

Faith Communities

119



Program agreements with faith communities and faith-based organizations

197



Community-based nurses

141

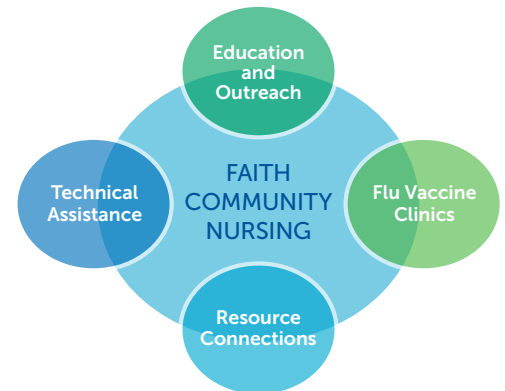


Community-based Health Promoters

24,192



Total recorded hours served by community-based Faith Community Nurses and Health Promoters



Activity/Outputs

33

Individuals Completed Fundamentals of Health Promotion Classes

20

Nurses Trained in Foundations of Faith Community Nursing Course

827

Individuals Completed Advance Care Planning Classes

342

Individuals Completed Hands-Only CPR Classes



* Statement of Need sources: Westberg Institute, 2019, Foundations of FCN: Advocacy, Care Coordination, and Transitional Care, p. 313

Doctors on the medical staffs practice independently and are not employees or agents of Texas Health hospitals or Texas Health Resources. © 2026 Texas Health Resources.

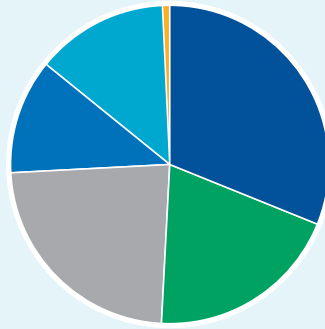
FCNs in Action

At a heart health workshop at Zion Baptist Church in Rowlett, Texas, a Texas Health FCN team member met a new mother during a blood pressure (BP) screening. After noticing a slightly elevated BP reading, the mother shared that her doctor had cautioned her about postpartum hypertension. The FCN team member reinforced the importance of daily monitoring and offered guidance on lowering sodium and making healthier food choices. The mother received a maternal blood pressure handout and said she'd learned new facts about serving sizes and hidden salt in common foods. Their conversation was a meaningful moment of support, education, and empowerment. **To learn more about Texas Health's Faith Community Nursing program, visit <https://www.texashealth.org/About-Texas-Health/Faith-and-Spirituality/Faith-and-Spirituality-Community-Nursing>**

Activities/Outputs

Through FCN partnerships and support, faith communities across North Texas were able to connect more than **118,845** individuals to preventive care and other services.

\$5,016,898
Community Cost Savings/Avoidance



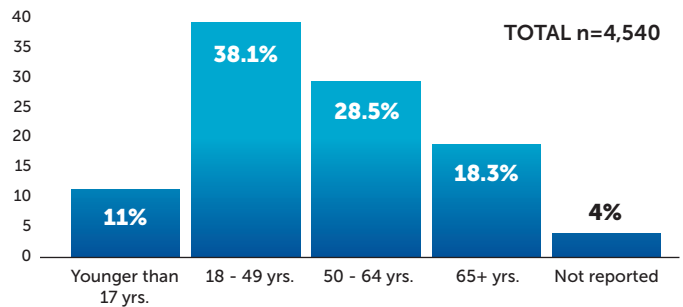
NON-MEDICAL DRIVERS OF HEALTH¹

- FOOD** | n=37,305
Hunger
- HEALTH EDUCATION** | n=23,245
Literacy²
- HEALTHCARE SYSTEM** | n=27,925
Health Coverage³
- ECONOMIC STABILITY** | n=13,757
Expenses | n=2
Medical Bills | n=2,565
Support | n=11,190
- COMMUNITY & SOCIAL CONTEXT** | n=16,357
Community Engagement | n=11,931
Support Systems | n=4,426
- NEIGHBORHOOD & PHYSICAL ENVIRONMENT** | n=163
Housing n=12
Transportation n=151

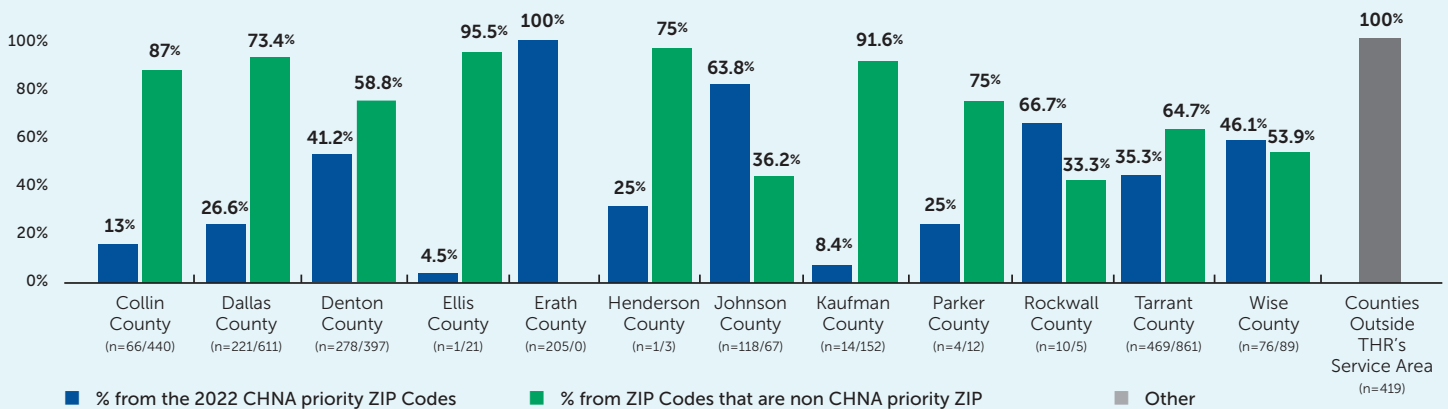
Flu Vaccination Demographics: A Look at the Communities Served

Flu vaccine clinics provided by Texas Health focus on serving communities who have limited access to immunizations. Fulfilling Texas Health's commitment to meet consumers' needs where they work, live, play and pray is exemplified in the care provided in communities of faith and faith-based organizations. In 2025, the FCN program organized **103 clinics**. Services were aligned with food pantries, congregations in Community Health Needs Assessment ZIP codes, senior community members, and outreach ministries to underserved communities. Each site welcomed the broader community, extending care well beyond congregational membership.

AGE BREAKDOWN OF FLU VACCINES PROVIDED



DISTRIBUTION OF FLU VACCINE BY COUNTY | n=4,540



FLU VACCINE ACTIVITIES AND OUTPUTS

103 | Flu vaccine clinics

1,141 (25.1%) | Flu vaccine recipients who speak a language other than English

4,540 | Total number of flu shots given

33% | Percentage of flu clinic sites in CHNA Zip codes.

122 | First-time flu shot doses

30.8% | Percentage of flu clinics focused on outreach beyond the church

¹ See Figure 1 in article for further understanding of categories: Artiga, S., & Hinton, E. (2018). Beyond health care: the role of social determinants in promoting health and health equity. Kaiser Family Foundation, 10, 1-13.

² Literacy includes community-based education and skill-building that helps people understand health information, manage everyday needs like finances and appointments, and confidently navigate services to support their health and quality of life.

³ Health Coverage includes community services—such as screenings, vaccinations, health fairs, and referrals—that help people access needed health care and preventive services by reducing cost, insurance, and access barriers.