

# Texas Health Community Impact Grant - 2023/24

ERATH COUNTY

ZIP CODES 76401, 76402 AND 76446

## Vision. Leadership. Teamwork.

Texas Health Community Impact uses cross-sector collaborative grants to address local community needs in resourceful and innovative ways. This data-driven, outcomes-focused approach pinpoints North Texas ZIP codes most in need of our help and drives how we engage with leaders, influencers and existing resources within those underserved areas. Together, we're responding to health disparities, eliminating root causes of chronic disease and providing tools that instill life-long health and well-being.

## Collaborating Organizations

### CNM

(Center for Nonprofit Management)  
*Leading the charge of to-be-determined funded and unfunded collaborating organizations*

## To join the cause or for more information, please contact:

**Dana Worrell, Program Manager**

Erath County  
Community Health Improvement  
Texas Health Resources

**DanaWorrell@TexasHealth.org**  
**817.475.8816**

## You can help.



To be part of the change, scan this QR code or [click here.](#)

## Collaboration by the People, for the Community

### About this Grant

To increase efficiency and effectiveness of community-based organizations in identified areas, this effort led by the Center for Nonprofit Management (CNM) will build the foundation for addressing mental health and maximize the impact of future Texas Health Community Impact grants. Through this grant, CNM will facilitate community-driven development and leverage cross-sector collaboratives to identify and implement innovative, community-wide interventions to address social determinants of health, like navigation to resources for affordable transportation, housing, and healthy food.

### Program Milestones

#### To reach by December 2023

- Develop individual organizational capacity to streamline services for consumers.
- Increase quantitative and qualitative data related to social determinants of health and navigation to services.



#### To reach by December 2024

- Invest in needed infrastructure for successful cross-sector collaboration in the county—including strengthening of organizational capacity, and development of needed processes such as collaborative internal and external communication, reporting and data collection.

## An Innovative Approach

Underserved communities often struggle with a lack of access to healthy food, housing, transportation, and healthcare. In many cases, behavioral health is at the core of these challenges.

In Erath County, a new grant—Collaboration by the People, for the Community—is building a foundation from which existing community resources can unite to tackle the Social Determinants of Health including the root causes of mental health and identify sustainable interventions. Led by the Center for Nonprofit Management (CNM), this effort aims to increase the capacity of cross-sector community organizations to collaborate effectively.

Dr. Ann Calahan, a member of the Texas Health Community Impact Southern Leadership Council, is enthusiastic about the innovative opportunity to join other Erath County leaders in breaking down silos to create long-term improvements in health and well-being.

"The grant will challenge us to open our eyes to the real needs of our community," said Dr. Calahan. "I'm very excited about the outreach efforts of Texas Health and am looking forward to working together to address behavioral health and other issues important to our community."

**\$1,498,000**

This innovative grant spanning efforts within Erath, Johnson and Kaufman Counties will support and fund multiple agencies in each county.

[TexasHealth.org/Community-Impact](https://TexasHealth.org/Community-Impact)

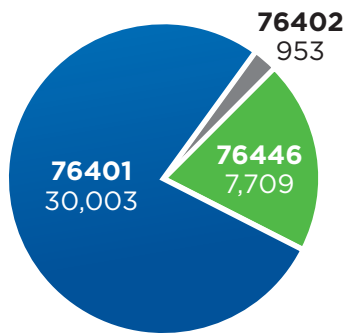


As an example of the data used to analyze the ZIP codes and determine areas of focus in each Texas Health Community Impact region, the following information is a snapshot for Erath County ZIP codes 76401, 76402 and 76446.



**FOR ADDITIONAL DATA AND DEFINITIONS**  
Review the Community Health Needs Assessment by scanning the QR code or visiting [TexasHealth.org/CHNA](https://TexasHealth.org/CHNA)

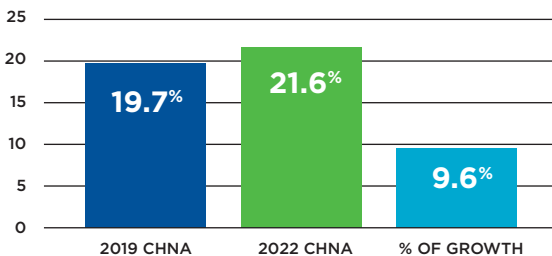
## DEMOGRAPHICS



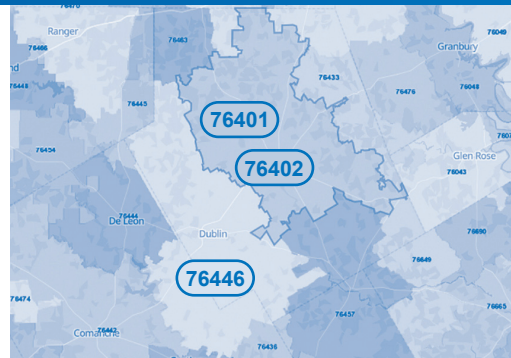
Source: 2022 Community Health Needs Assessment

Of the **43,378** Erath County residents—made up of approximately **73.9%** White, **21.6%** Hispanic/Latino, **3%** Other and **2%** Black—approximately **89%** reside in high-need ZIP codes.

### Hispanic/Latino Population Increase



Sources: 2019 Community Health Needs Assessment; 2022 Community Health Needs Assessment



## NAVIGATION

At least **88%** percent of adults living in the U.S. have health literacy inadequate to navigate the healthcare system and promote their well-being.

### Erath County neighbors said:

"...Being aware of resources, as far as navigating and having access to resources, knowing where to go or having someone help you get those services we have."

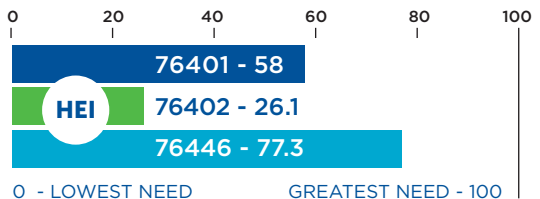
"...Language barrier is for everybody though the mental facility and mental health [because there are limitations to accessing Spanish-speaking translators]... Because a lot of technology does not translate."

"Mental health is most urgent and hardest issue to address; need more education in the community, need more resources..."

Sources: Milken Institute Study of Health Literacy in United States, [https://milkeninstitute.org/sites/default/files/2022-05/Health\\_Literacy\\_United\\_States\\_Final\\_Report.pdf](https://milkeninstitute.org/sites/default/files/2022-05/Health_Literacy_United_States_Final_Report.pdf); 2022 Community Health Needs Assessment

## SOCIAL DETERMINANTS OF HEALTH

Conditions in the environments in which people are born, live, learn, work, play, worship, and age that affect a wide range of health, functioning, and quality-of-life outcomes and risks. Through Texas Health Community Impact grants, we're trying to address the whole person—not just a disease.



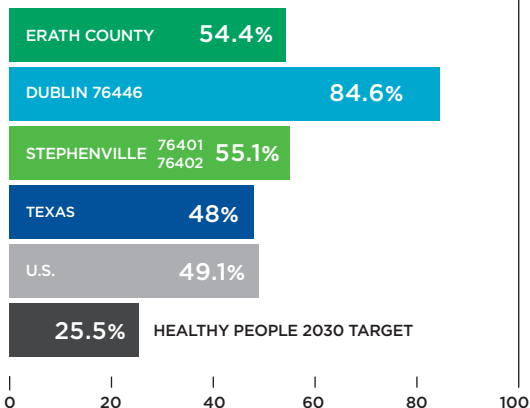
Sources: <https://www.healthypeople.gov/2020/topics-objectives/topic/social-determinants-of-health>; 2022 Community Health Needs Assessment

### Health Equity Index (HEI)

Formerly the SocioNeeds Index, HEI incorporates estimates for different social and economic determinants of health that are associated with poor health outcomes.

### Lack of Affordable Housing

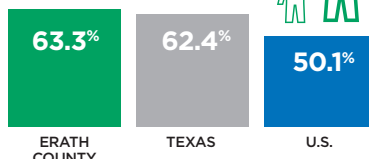
Renters spending 30% or more of household income on rent



Source: <https://www.healthytexas.org/indicators/index/>

### Food Insecurity

Households with children receiving SNAP



Source: 2022 Community Health Needs Assessment

### Transportation

According to estimates, approximately **25%** of lower-income patients cancel or miss appointments due to barriers to transportation (Syed et al., 2013).

Source: <https://www.ruralcenter.org/population-health-toolkit/data/transportation-health-status>